



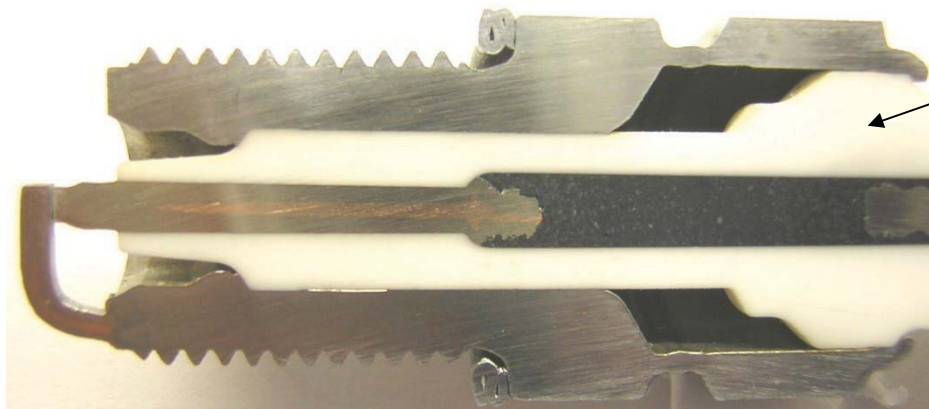
**BOSCH**

**INDUSTRIAL SERIES**

## Features and Benefits

### Pyranit insulator

- ❑ 95% Aluminum Oxide
- ❑ Better resistance to electrical punctures
- ❑ Superior thermal conductivity
- ❑ Higher mechanical strength



**Pyranit Insulator**

**BeQIK**  
Be Better Be Bosch

3

Industrial Aftermarket Division

Confidential | M. Hallis (AMMKT3.1) | 5/31/2007 | © 2007 Robert Bosch LLC and affiliates. All rights reserved.



**BOSCH**

**INDUSTRIAL SERIES**

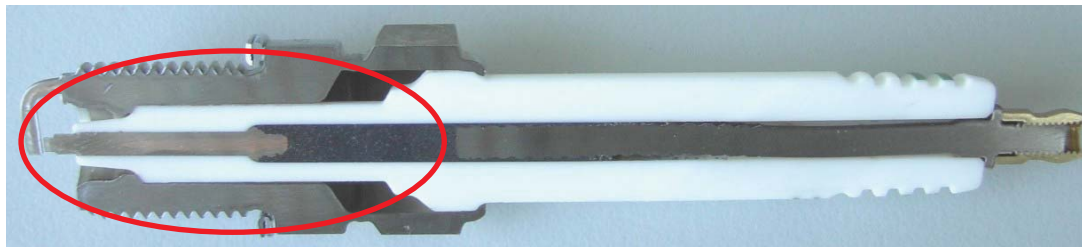
## Features and Benefits

### Pyranit insulator

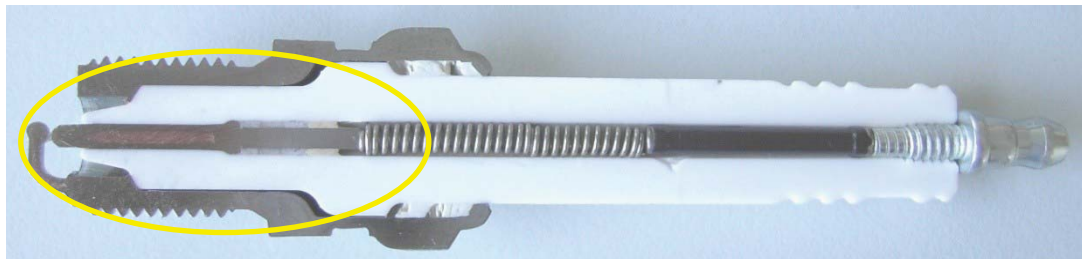
An Optimized insulator foot design offers:

- Exceptional heat transfer properties
- Improved resistance to combustion deposits

**Bosch**



**Brand "C"**





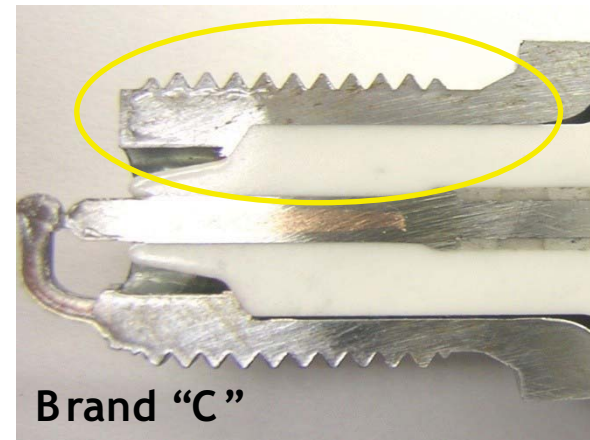
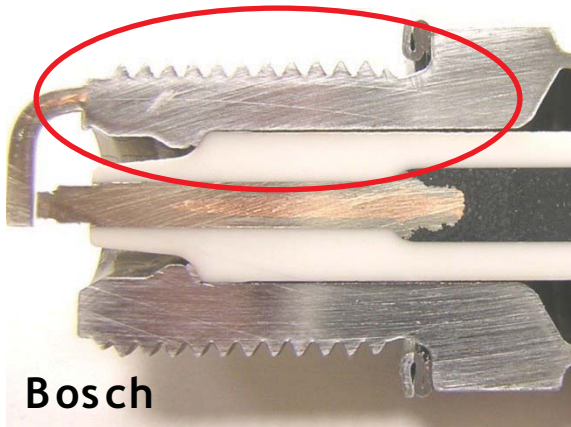
**BOSCH**

**INDUSTRIAL SERIES**

## Features and Benefits

### Specially constructed steel shell

- Optimized steel shell construction for high mechanical strength
- Extra material in tread area helps control shell deformation under torque
- Specially engineered crush washer offers high torque retention





**BOSCH**

**INDUSTRIAL SERIES**

## Features and Benefits

Specially constructed steel shell

- Bosch offers rolled threads, not cut, for better thread quality
- Nickel coating vs. Zinc provides superior corrosion resistance



**BeQIK**  
Be Better Be Bosch

6

Industrial Aftermarket Division

Confidential | M. Hallis (AMMKT3.1) | 5/31/2007 | © 2007 Robert Bosch LLC and affiliates. All rights reserved.



**BOSCH**

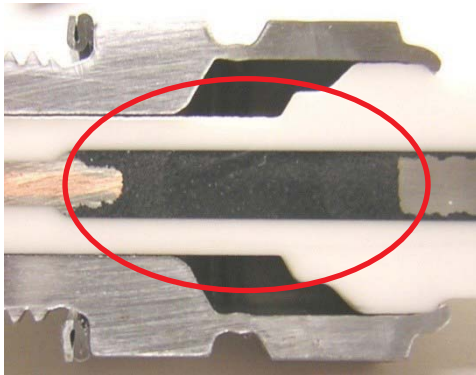
**INDUSTRIAL SERIES**

## Features and Benefits

### Electrode seal and Proprietary resistor

- Graphitized-metal-glass resistor vs. pre-manufactured, provides consistent resistive value for EIS equipped engines.
- Gas tight seal prevents “Blow by” of combustion gasses
- Reliable thermal conductivity from center electrode to insulator
- No change in heat range over time

**Bosch**



**Brand “C”**



**BeQIK**  
Be Better Be Bosch

Industrial Aftermarket Division

7

Confidential | M. Hallis (AMMKT3.1) | 5/31/2007 | © 2007 Robert Bosch LLC and affiliates. All rights reserved.



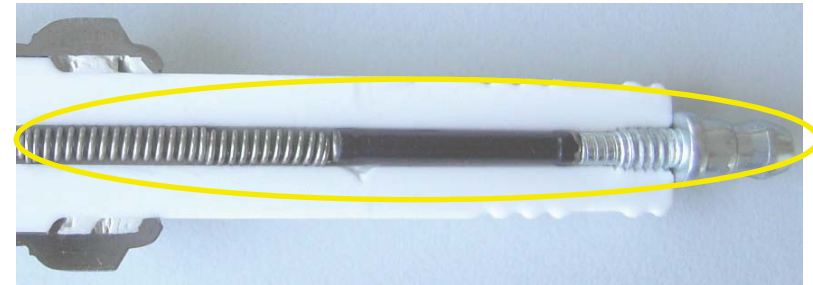
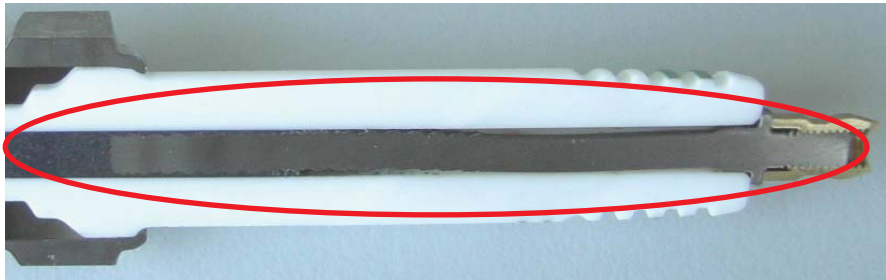
**BOSCH**

**INDUSTRIAL SERIES**

## Features and Benefits

### Full length terminal stud and threaded brass terminal nut

- Full length terminal stud for maximum strength and vibration free connection.
- Threaded and crimped brass terminal nut for corrosion resistance and optimum conductivity.





**BOSCH**

**INDUSTRIAL SERIES**

## Features and Benefits

- Platinum / Iridium Alloy Center and Ground electrodes.

Bosch engineers worked to perform “in-service” field tests of several alloys. This collective testing led to the development of a proprietary Platinum and Iridium alloy which provides superior wear and durability, for a more consistent level of performance over the life of the plug.

- Recognizing that this industry, based on location, has large variances in gas btu quality as well as various impurities, the in-service testing provided an extremely challenging operating environment. Bosch did not encounter a single failure or engine shut down during the test.

**BeQIK**  
Be Better Be Bosch

9

Industrial Aftermarket Division

Confidential | M. Hallis (AMMKT3.1) | 5/31/2007 | © 2007 Robert Bosch LLC and affiliates. All rights reserved.



**BOSCH**

**INDUSTRIAL SERIES**

## Features and Benefits

### Platinum / Iridium Alloy Center and Ground electrodes

- Specialized welding process ensures a secure, fracture free, virtually void free weld.
- You can see the difference.

**Bosch**



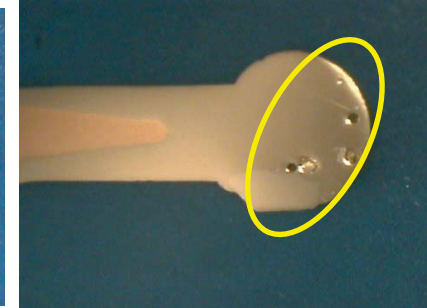
**Bosch**



**Brand "C"**



**Brand "C"**





**BOSCH**

**INDUSTRIAL SERIES**

## Coverage

- Bosch spark plugs can be used with confidence in many popular natural gas engines manufactured by Caterpillar, Waukesha and others.
  
- Bosch P/N# 7301 replaces the following competitive plug numbers:
  - Caterpillar 194-8518
  - Champion KB 77WPCC
  - Champion RB 77WPCC
  - Waukesha 60999Z

